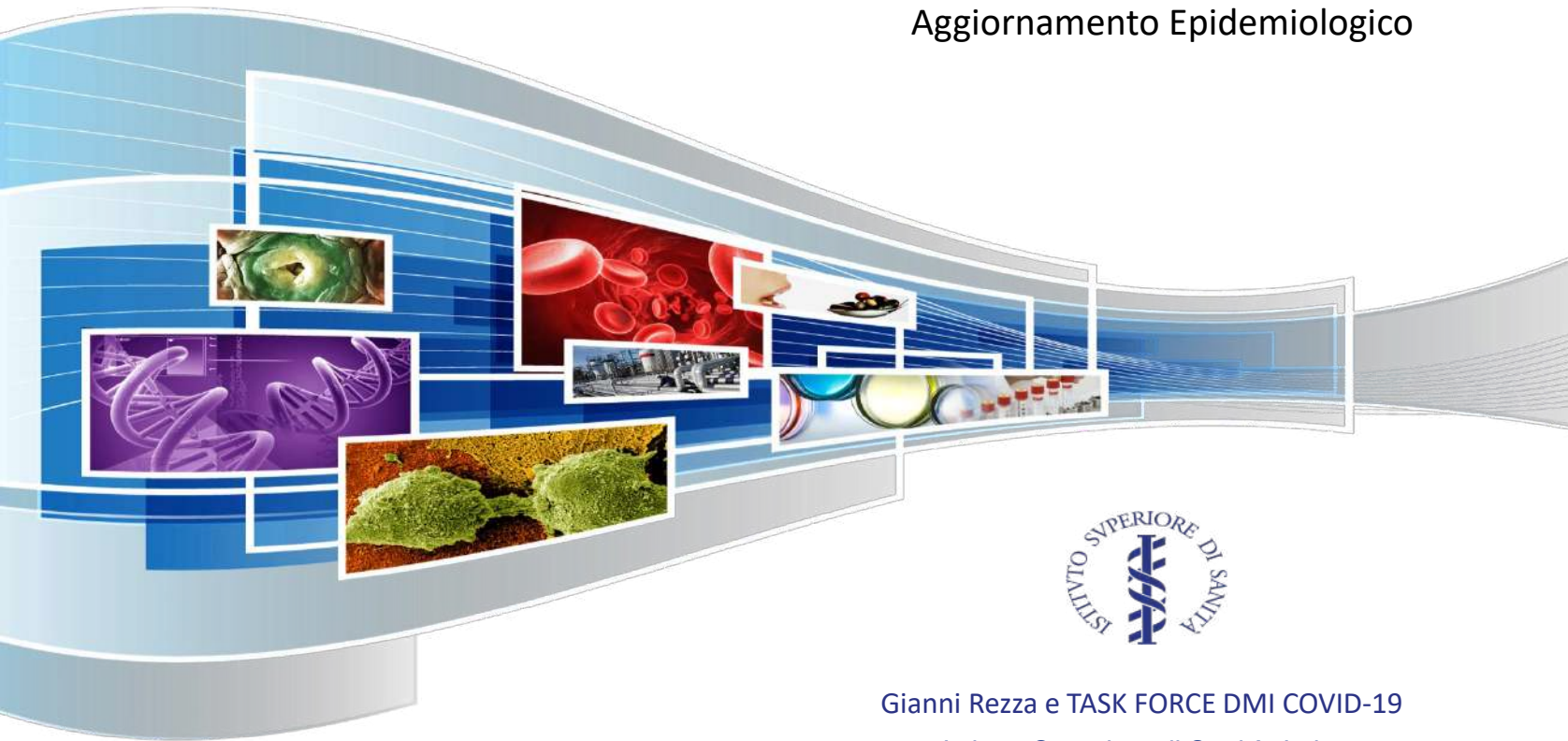


Meeting NUOVO CORONAVIRUS COVID-19 ISS Aula Pocchiarì, mercoledì 25 marzo ore 14:00

COVID-19

Aggiornamento Epidemiologico

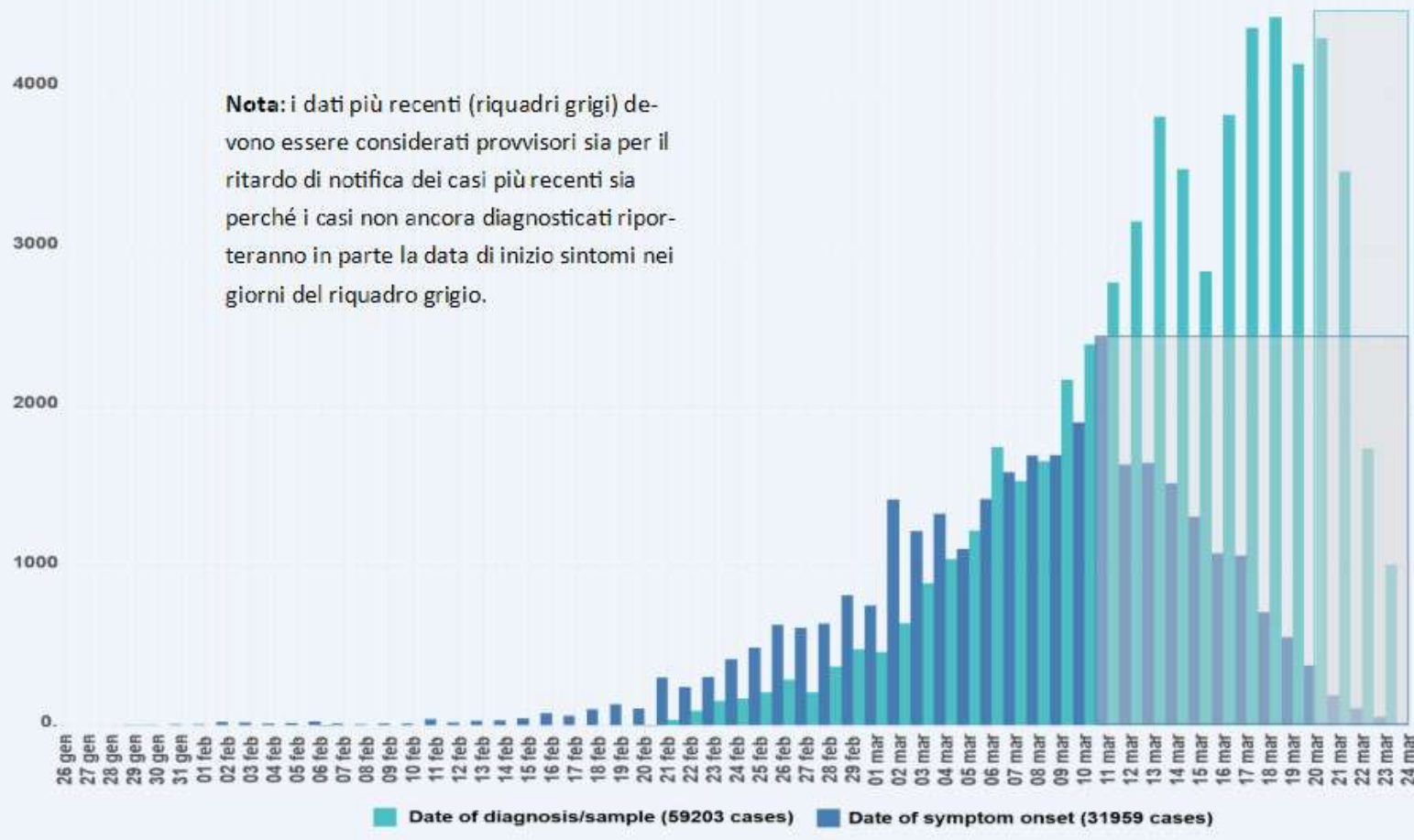


Gianni Rezza e TASK FORCE DMI COVID-19

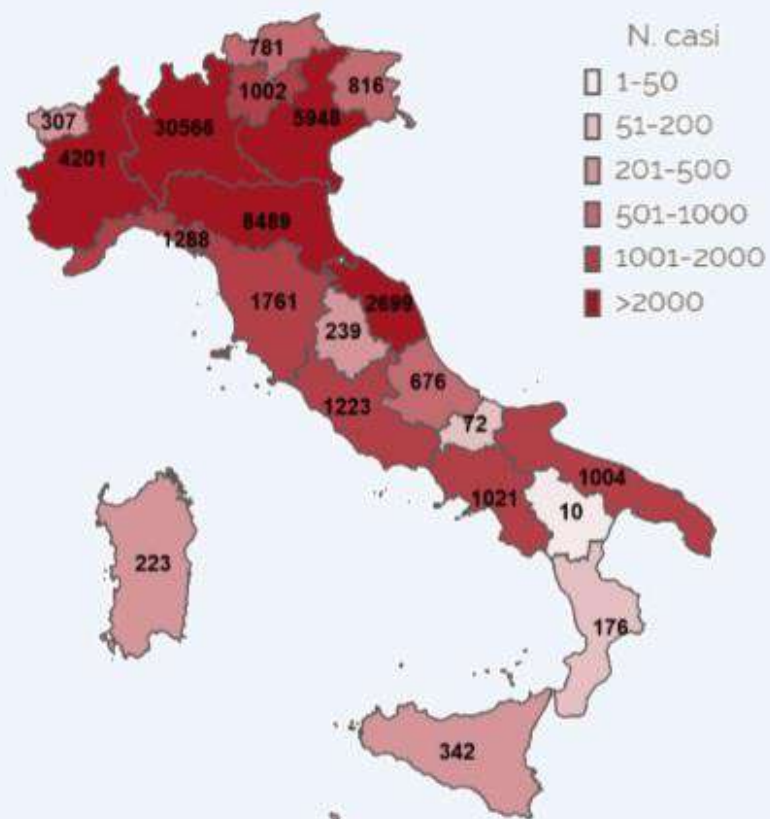
Istituto Superiore di Sanità, Italy

COVID-19 – in Italia

AGGIORNAMENTO 24 marzo 2020

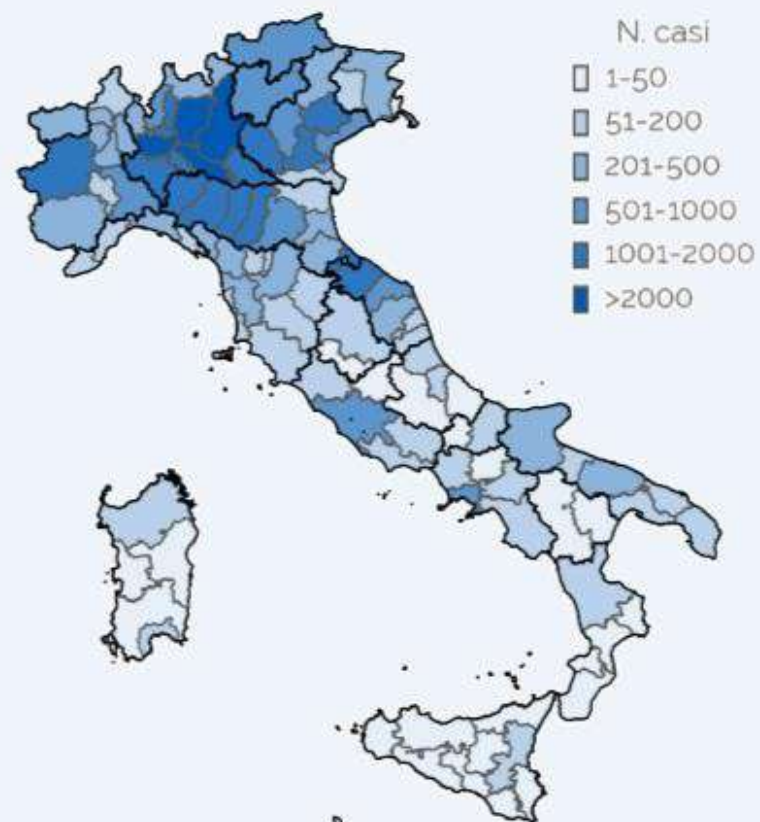


Numero totale di casi di COVID-19 diagnosticati dai laboratori regionali di riferimento



per Regione/PA di diagnosi

(dato disponibile per 62.844)

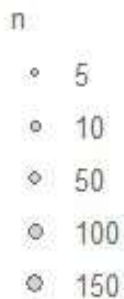
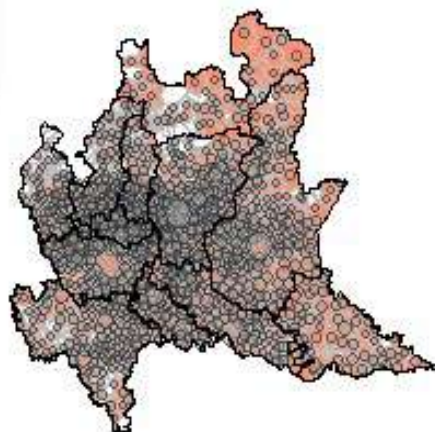


per Provincia di domicilio/residenza

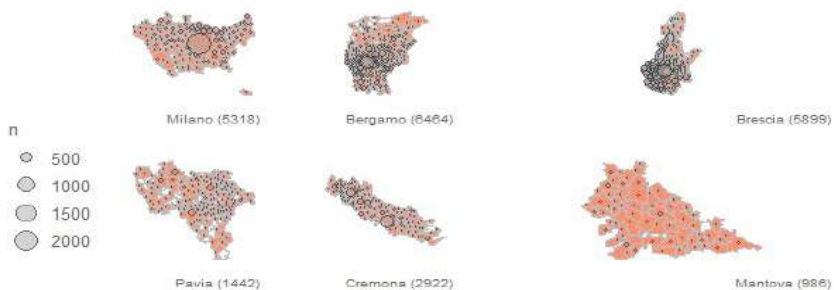
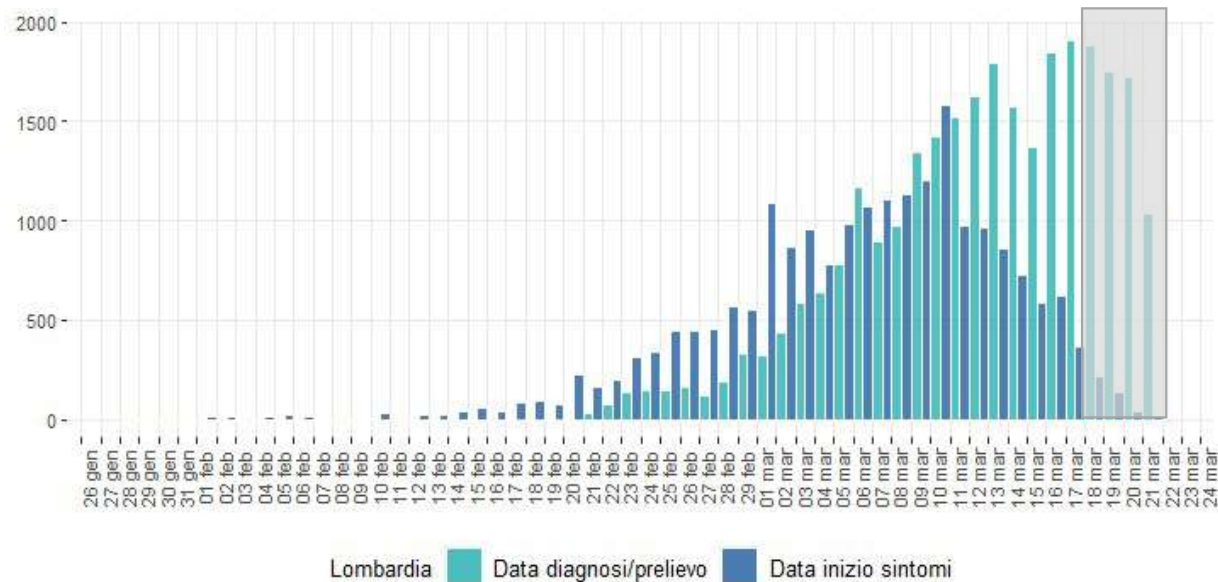
(dato disponibile per 59.881)



Lombardia



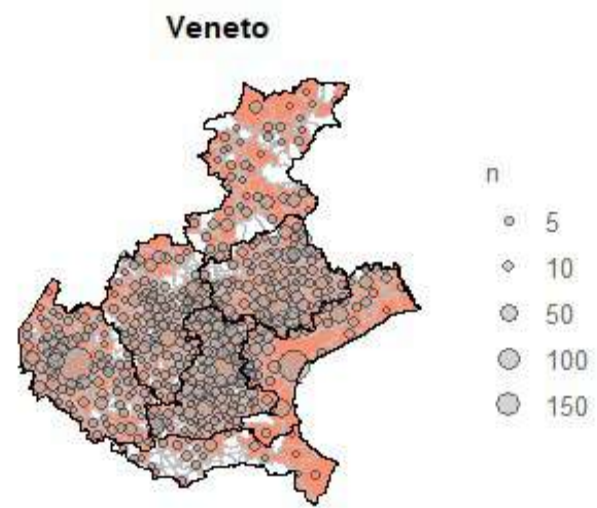
Informazione disponibile per: 28124 casi.



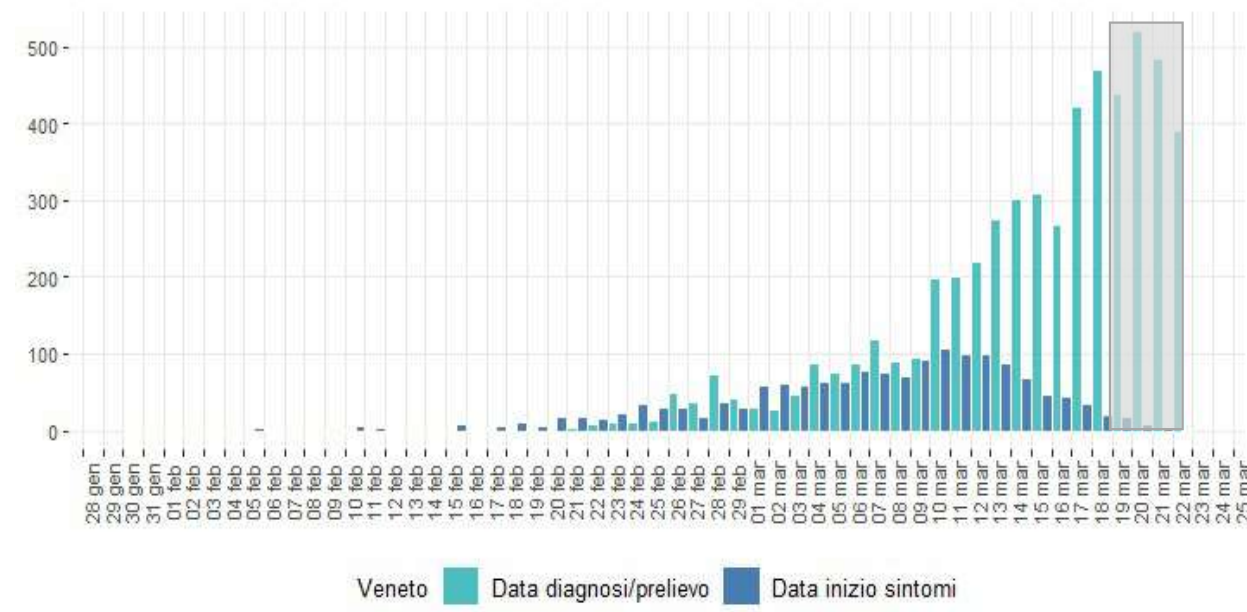
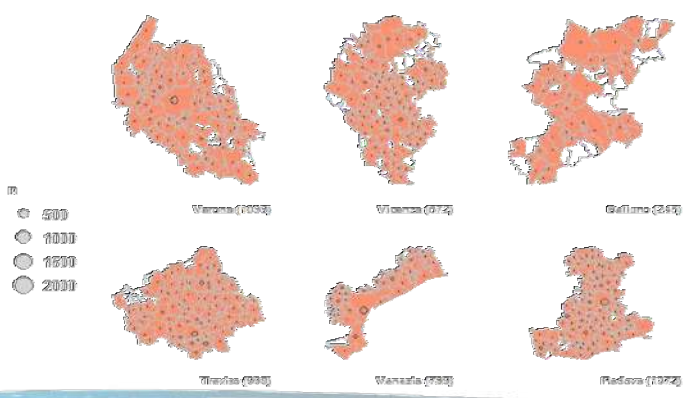
Dati al 23 Marzo:

- 28759 casi confermati di COVID-19
- Età mediana 65 anni (0-100)
- 3464 decessi
- 3957 casi di COVID-19 tra operatori sanitari





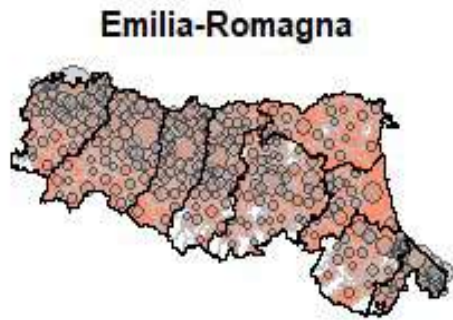
Informazione disponibile per: 5265 casi.



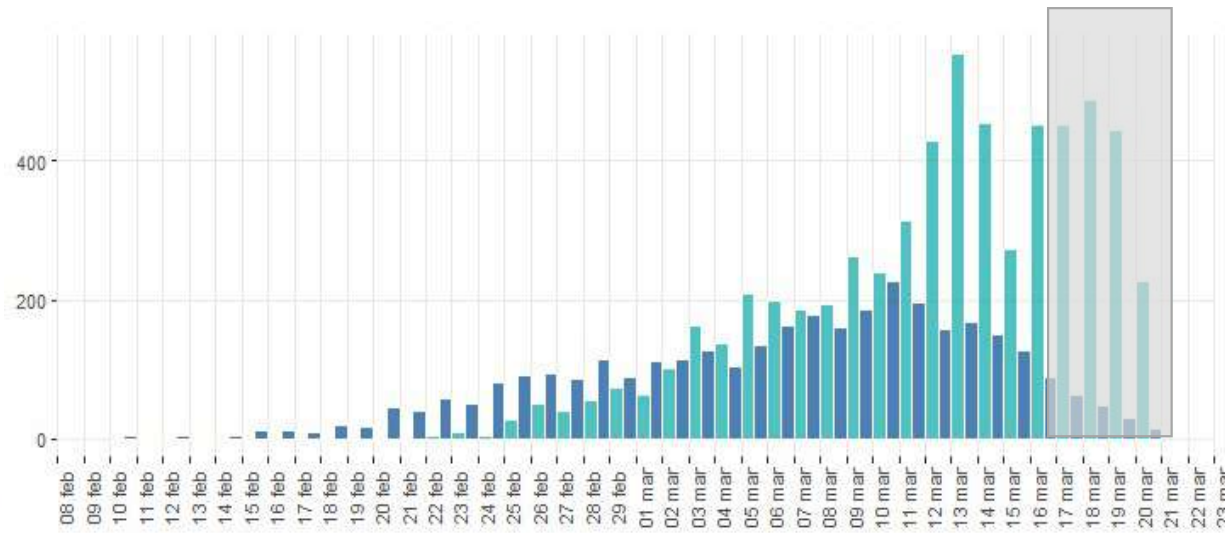
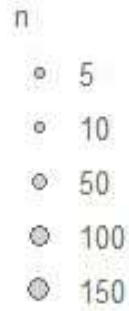
Dati al 23 Marzo:

- 5505 casi confermati di COVID-19
- Età mediana 58 anni (0-100)
- 201 decessi
- 74 casi di COVID-19 tra operatori sanitari





Informazione disponibile per: 7317 casi.

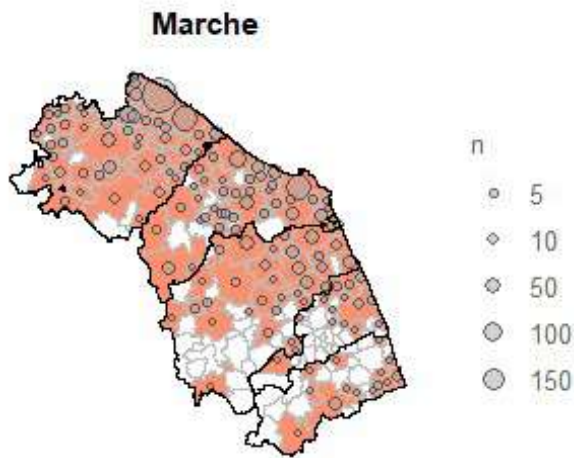


Emilia-Romagna Data diagnosi/prelievo Data inizio sintomi

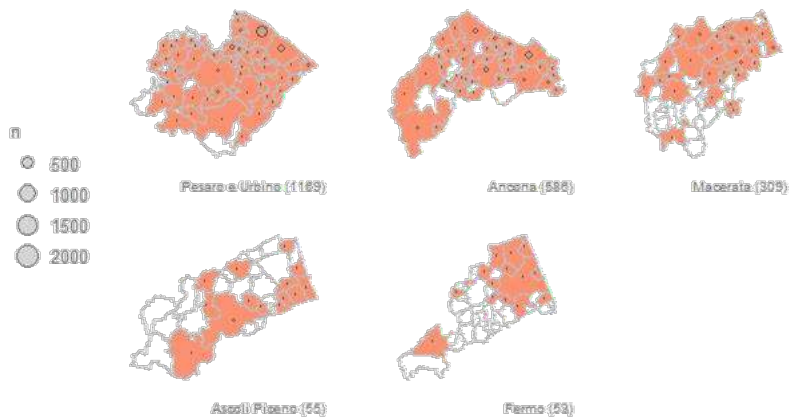
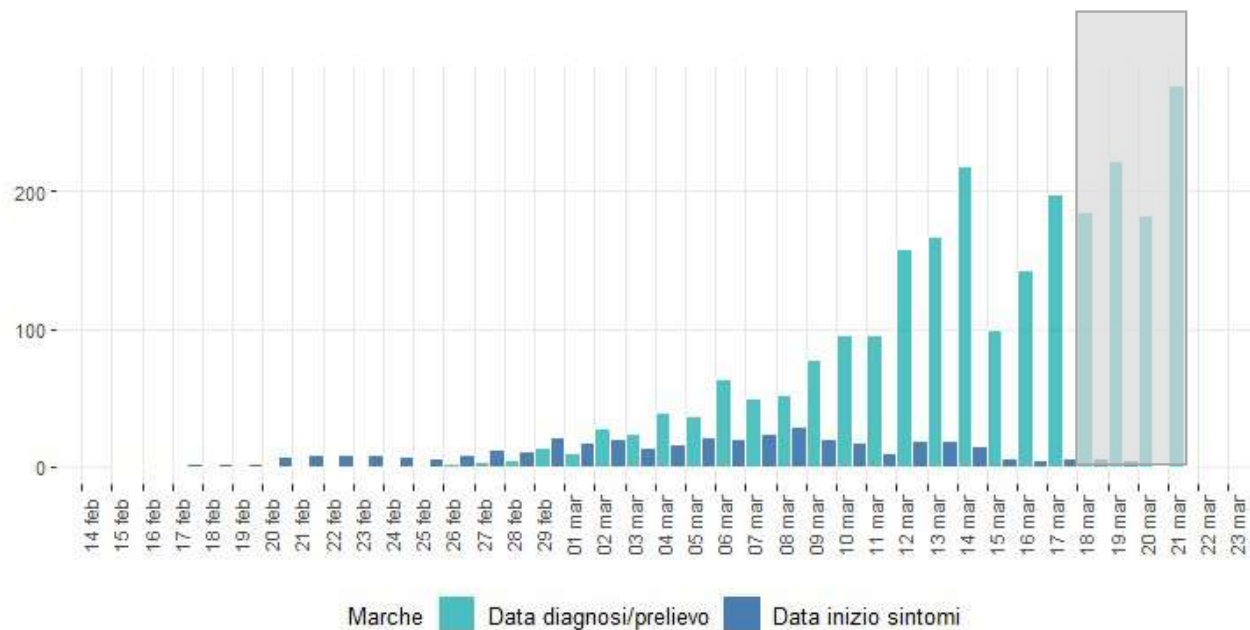
Dati al 23 Marzo:

- 7510 casi confermati di COVID-19
- Età mediana 63 anni (0-100)
- 807 decessi
- 472 casi di COVID-19 tra operatori sanitari





Informazione disponibile per: 2172 casi.



Dati al 23 Marzo:

- 2556 casi confermati di COVID-19
- Età mediana 65 anni (0-100)
- 43 decessi
- 42 casi di COVID-19 tra operatori sanitari

